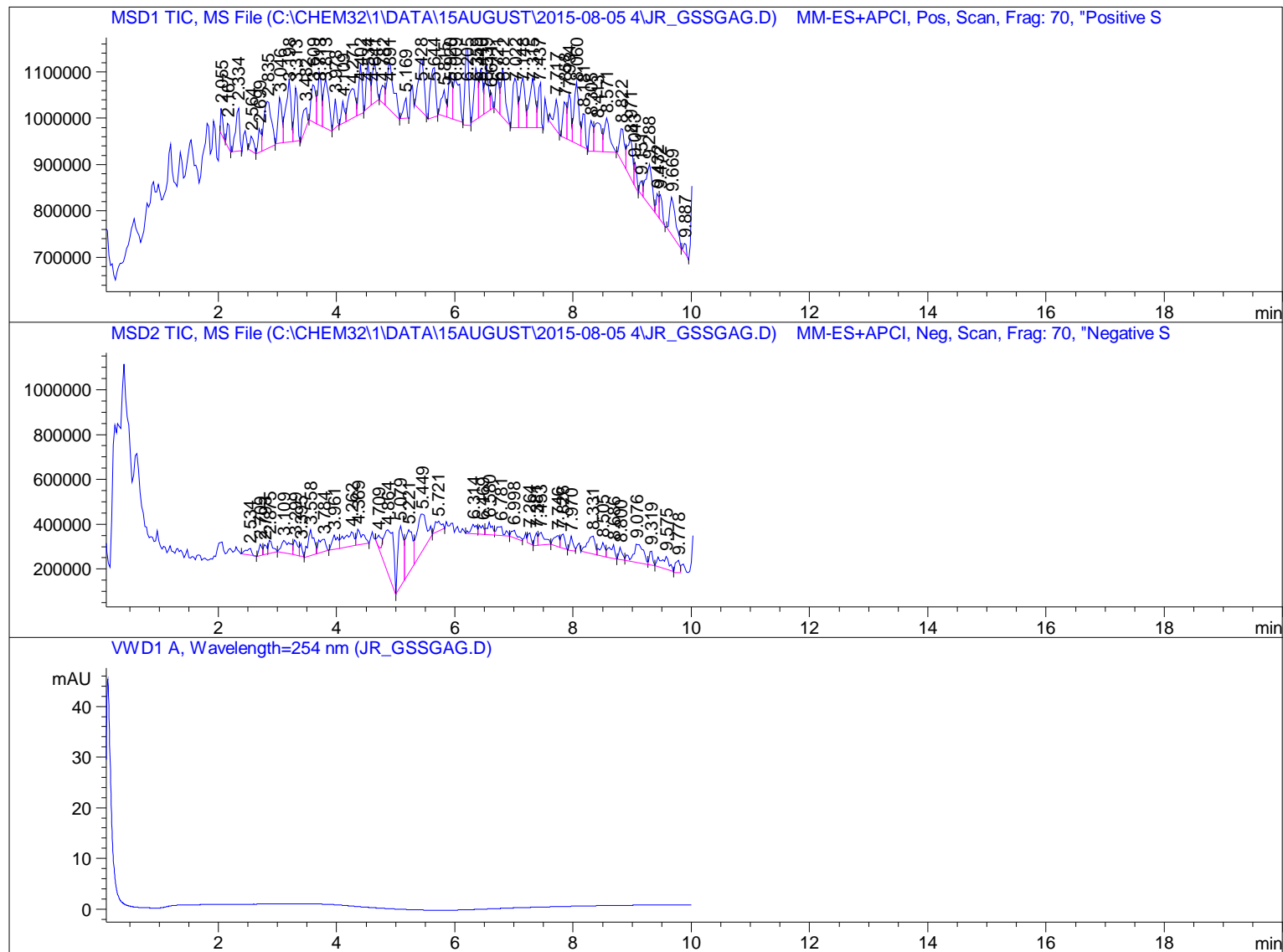


Sample Name: JR_GSSGAG

```

=====
Acq. Operator   :                               Seq. Line :    4
Acq. Instrument : Instrument 1                  Location  : Vial 4
Injection Date  : 8/5/2015 2:43:32 PM          Inj       :    1
                                                Inj Volume: 10.000 µl

Sequence File   : C:\Chem32\1\DATA\15August\2015-08-05 4\DEF_LC.S
Method          : C:\CHEM32\1\DATA\15AUGUST\2015-08-05 4\NOCOLUMNMEOH.M (Sequence Method)
Last changed    : 8/5/2015 1:22:26 PM
  
```



```

=====
                          Area Percent Report
=====
  
```

```

Sorted By      :      Signal
Multiplier:    :      1.0000
Dilution:      :      1.0000
Use Multiplier & Dilution Factor with ISTDs
  
```

Signal 1: MSD1 TIC, MS File

Sample Name: JR_GSSGAG

Peak #	RetTime [min]	Type	Width [min]	Area	Height	Area %
1	2.055	BV	0.0459	1.59711e5	5.80263e4	0.6951
2	2.167	VB	0.0515	1.69607e5	5.49113e4	0.7381
3	2.334	BB	0.0668	4.28007e5	9.83025e4	1.8627
4	2.564	BB	0.0759	1.53030e5	3.35843e4	0.6660
5	2.699	BV	0.0549	1.71147e5	5.19977e4	0.7448
6	2.835	VB	0.1325	8.72625e5	1.01404e5	3.7976
7	3.046	BV	0.0707	4.25379e5	1.00230e5	1.8512
8	3.198	VV	0.1012	7.90162e5	1.36387e5	3.4387
9	3.313	VB	0.0637	4.48098e5	1.17163e5	1.9501
10	3.482	BB	0.1089	2.82810e5	4.47299e4	1.2308
11	3.609	BV	0.0875	4.25186e5	8.22575e4	1.8504
12	3.713	VV	0.0718	4.96543e5	1.15181e5	2.1609
13	3.813	VB	0.1032	6.50334e5	1.06632e5	2.8302
14	3.978	BB	0.0559	2.14131e5	6.38764e4	0.9319
15	4.109	BV	0.0567	1.63562e5	4.81021e4	0.7118
16	4.271	VV	0.1369	5.37299e5	6.47493e4	2.3383
17	4.402	VB	0.0721	4.14382e5	1.07401e5	1.8034
18	4.534	BV	0.0640	3.91952e5	9.52493e4	1.7058
19	4.641	VB	0.0792	4.16667e5	8.81039e4	1.8133
20	4.782	BV	0.0726	1.71039e5	3.91814e4	0.7443
21	4.891	VB	0.1316	8.10729e5	1.02655e5	3.5282
22	5.169	BB	0.0571	1.58973e5	4.51131e4	0.6918
23	5.428	BB	0.1091	7.67038e5	1.16134e5	3.3381
24	5.644	BB	0.0984	6.44383e5	1.13292e5	2.8043
25	5.815	BV	0.0820	2.80013e5	5.63840e4	1.2186
26	5.920	VV	0.0702	4.29796e5	9.25309e4	1.8704
27	6.009	VB	0.1177	6.52145e5	9.23152e4	2.8381
28	6.205	BB	0.0644	7.35552e5	1.77289e5	3.2011
29	6.359	BV	0.0769	5.19103e5	1.12529e5	2.2591
30	6.440	VV	0.0722	4.43248e5	1.02351e5	1.9290
31	6.539	VV	0.0713	4.24651e5	9.92396e4	1.8481
32	6.611	VB	0.0303	6.72567e4	3.70218e4	0.2927
33	6.721	BV	0.0636	3.00560e5	7.85011e4	1.3080
34	6.812	VB	0.0842	5.36482e5	1.06154e5	2.3347
35	7.022	BV	0.1035	6.29030e5	1.06547e5	2.7375
36	7.148	VV	0.0927	6.15361e5	1.09301e5	2.6780
37	7.315	VV	0.1005	6.96883e5	1.06387e5	3.0328
38	7.437	VB	0.0562	3.60560e5	1.04656e5	1.5691
39	7.717	VB R	0.0738	2.92247e5	6.59951e4	1.2718
40	7.858	BV	0.0701	3.32215e5	8.03277e4	1.4458
41	7.934	VV	0.0693	4.24145e5	1.01963e5	1.8459
42	8.060	VV	0.0875	7.28060e5	1.33916e5	3.1685
43	8.181	VB	0.0637	2.92426e5	7.65298e4	1.2726
44	8.305	BV	0.0666	2.84459e5	6.55879e4	1.2380
45	8.413	VV	0.1302	5.17774e5	6.15442e4	2.2533
46	8.571	VB	0.0983	4.67410e5	7.34319e4	2.0341
47	8.822	BV	0.0905	3.96701e5	7.30499e4	1.7264
48	8.971	VV	0.1084	5.33913e5	8.49160e4	2.3236
49	9.043	VB	0.0475	1.45784e5	5.11082e4	0.6344
50	9.151	BV	0.0544	9.78034e4	2.97254e4	0.4256
51	9.288	VV	0.1177	6.17788e5	8.79007e4	2.6886
52	9.432	VV	0.0494	1.49096e5	5.02712e4	0.6489
53	9.472	VB	0.0627	2.05773e5	5.47332e4	0.8955
54	9.669	BB	0.1127	5.66462e5	8.19265e4	2.4652

Sample Name: JR_GSSGAG

Peak #	RetTime [min]	Type	Width [min]	Area	Height	Area %
55	9.887	BB	0.0562	7.27567e4	2.15835e4	0.3166

Totals : 2.29782e7 4.56038e6

Signal 2: MSD2 TIC, MS File

Peak #	RetTime [min]	Type	Width [min]	Area	Height	Area %
1	2.534	BB	0.0930	2.03262e5	3.07975e4	1.0238
2	2.709	BV	0.0603	1.87338e5	5.17999e4	0.9436
3	2.793	VV	0.0628	1.68056e5	4.45902e4	0.8465
4	2.875	VB	0.0769	2.84109e5	6.15893e4	1.4311
5	3.109	BV	0.1481	5.85598e5	5.53039e4	2.9497
6	3.299	VV	0.0840	3.39315e5	6.73477e4	1.7091
7	3.395	VB	0.0481	1.62981e5	5.65210e4	0.8209
8	3.558	BV	0.0999	7.99647e5	1.16182e5	4.0278
9	3.784	VB	0.1278	4.83125e5	5.43308e4	2.4335
10	3.961	BV	0.0966	3.88309e5	6.35859e4	1.9559
11	4.262	VV	0.1915	7.75486e5	6.46412e4	3.9061
12	4.369	VB	0.1144	4.95858e5	7.22188e4	2.4977
13	4.709	BV X	0.0780	2.39455e5	5.11369e4	1.2061
14	4.864	VB R	0.1625	2.42454e6	1.93178e5	12.2125
15	5.079	BV	0.0953	1.65423e6	2.70962e5	8.3324
16	5.221	VV	0.1429	1.66183e6	1.93829e5	8.3707
17	5.449	VV R	0.1672	1.89133e6	1.63285e5	9.5267
18	5.721	BB	0.1370	3.65325e5	4.44300e4	1.8402
19	6.314	BV	0.1071	2.78561e5	4.33322e4	1.4031
20	6.469	VV	0.0877	2.19640e5	4.17355e4	1.1063
21	6.580	VV	0.0972	3.34550e5	5.73885e4	1.6851
22	6.781	VB	0.1282	3.51169e5	4.43936e4	1.7688
23	6.998	BV	0.1011	2.35284e5	3.56424e4	1.1851
24	7.264	VB	0.0596	1.89524e5	5.07454e4	0.9546
25	7.381	BV	0.0546	1.80176e5	5.49223e4	0.9076
26	7.453	VB	0.0992	4.09579e5	5.74872e4	2.0631
27	7.746	BV	0.1143	3.30300e5	5.18045e4	1.6637
28	7.826	VB	0.0774	2.95539e5	6.46835e4	1.4886
29	7.970	BV	0.0611	2.34654e5	6.40201e4	1.1820
30	8.331	BV	0.1362	7.21925e5	8.28329e4	3.6364
31	8.505	VV	0.0945	3.45050e5	6.08420e4	1.7380
32	8.686	VB	0.1178	4.19067e5	6.29034e4	2.1109
33	8.800	BV	0.0646	2.07852e5	5.36588e4	1.0470
34	9.076	VV R	0.1492	9.12297e5	8.50320e4	4.5953
35	9.319	VB	0.0590	2.40583e5	6.53310e4	1.2118
36	9.575	BB	0.1632	5.67776e5	5.79736e4	2.8599
37	9.778	BV	0.0850	2.69652e5	5.44530e4	1.3582

Totals : 1.98530e7 2.74491e6

Signal 3: VWD1 A, Wavelength=254 nm

=====
*** End of Report ***